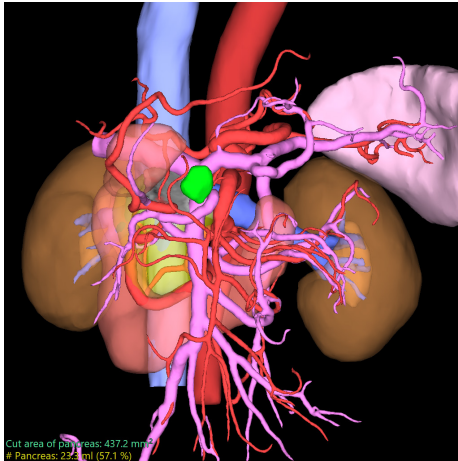




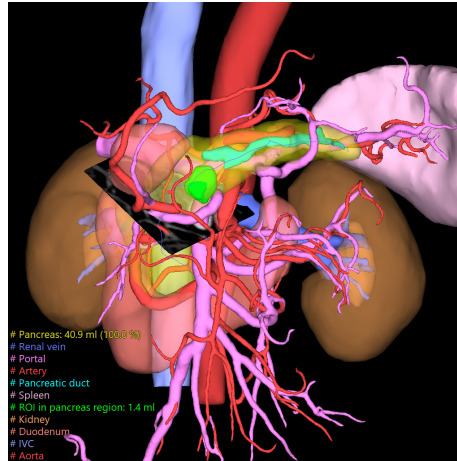
Visualize, Plan and Execute with 3D Precision

Pancreas Analysis

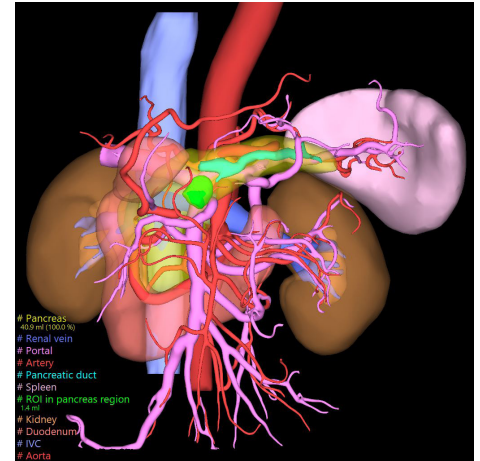
Pancreas Resection Pre-op Simulation



3D Reconstruction



Resection Line Decision



Resection Cross-Section Area and Pancreatic Volumetry



Fujifilm's advanced Vincent software enhances pancreas analysis, empowering surgeons to confirm patient-specific anatomy with precision. The software calculates the total pancreas volume and remnant volume, displays the resection cross-section and area, and assists in checking the resection margin. Additionally, it provides valuable insights for selecting the most appropriate resection device.

- Visualizes accurate, automatic 3D details of the pancreas, pancreatic duct, arterial system, venous system, stomach, duodenum, spleen, kidney, and tumor.
- Offers advanced visualization and analysis tools to select the safest and most optimal surgical approach.
- Facilitates procedure planning, including determining the resection line with precision.
- Simplifies complex surgical planning, ensuring better efficiency and outcomes for both surgeons and patients.

Please contact your product specialist regarding hardware requirements.

FUJIFILM Healthcare Americas Corporation

81 Hartwell Avenue, Suite 300, Lexington, MA 02421

hca.fujifilm.com

800.431.1850

©2025 FUJIFILM Healthcare Americas Corporation

DOC-0064917-A

FUJIFILM
Value from Innovation