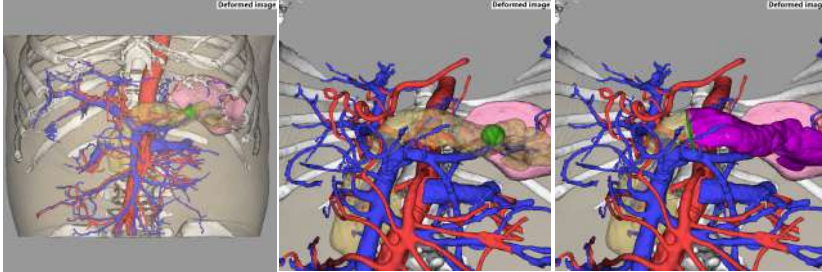


# PREPARE FOR SURGERY

Visualize your knowledge  
quantify your intuition



## ENDOSCOPE SIMULATOR



*(L) 3D image*

*(C) Endo-Camera View*

*(R) Pancreas Resection plan*

## Pancreas Cancer Resection

Fujifilm's Clinical 3D software is useful for surgical planning for partial pancreatectomy. The software's port simulation helps obtain an optimal surgical view and a virtual pancreatectomy line can be set to confirm the amount of pancreas remaining and resected. Automatic 3D constructed images also help confirm the anatomical relationship between the pancreas, vasculature, spleen, and tumor for each patient prior to surgery.



For more information please contact us

Web : [healthcaresolutions-us.fujifilm.com/clinical-3d](http://healthcaresolutions-us.fujifilm.com/clinical-3d)

**FUJIFILM**

# More Product Information

☒ More images

☒ Case Study

☒ Demo Videos

☒ Webinars

☒ References



The following are the off-the-shelf software and hardware requirements used for Clinical 3D Base Tools. Please contact with us to refer more details of requirements.

Server	Recommended requirements	Laptop Standalone	Recommended requirements
OS	Microsoft® Windows Server®2019 Standard Edition (x64)	OS	Microsoft® Windows 10 Professional (x64)
CPU	Intel® Xeon® Processor 16 cores or more, 2.0GHz processor or greater, 2CPUs or more	CPU	Intel Core i7-7820HQ 2.9GHz or greater, Quad core or more
Main memory	128GB	Main memory	32 GB or grater
HDD	SATA 7200pm For OS and software : 80GB or greater For DB : 500GB or greater For : setting : 100GB or greater For images : depends on the image storage	HDD	1TB SATA 6.0Gb/s NCQ HDD (7200pm) RAID1
Network adaptor	1000BASE-T or faster	Network adaptor	1000BASE-T or faster
USB	1 port	USB	1 port
Graphic	VRAM : 2.0GB or more DirectX 11 is needed	Graphic	VRAM : 1.0GB or more
Monitor	SXGA (1280*1024) or larger Single screen	Monitor	17.3 Inch FullHD (1920x1080) LCD monitor LED backlight