

Synapse 3D Clinical Application

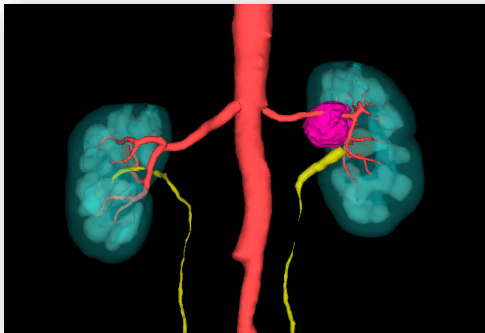
# Kidney Analysis

Synapse® 3D Kidney Analysis enables extraction of the kidney, renal cortex, vessels, and surrounding organs from contrast-enhanced CT images for analysis. Extracted regions can be divided, and nephrectomy simulations can be performed.

- Recommended image type      ▶ Contrast-enhanced CT, early and delayed phases
- Analysis target                    ▶ Kidney, ureters

## VOLUME CALCULATION

### Combined mask



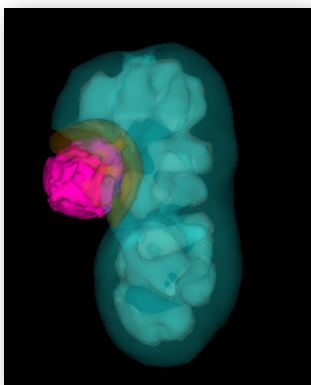
### Volume measurements

```

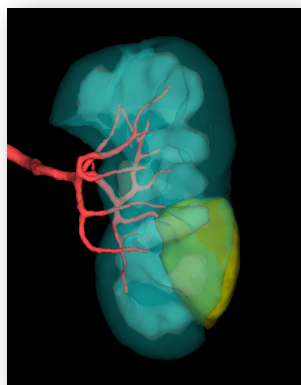
Cut area of kidney: 14.5 cm2
Cut area of cortex: 10.7 cm2 (74.0 %)
Total volume of kidney: 271.9 ml
Total volume of cortex: 190.1 ml (69.9 %)
# Left kidney: 127.2 ml (46.8 %)
# Right kidney: 137.3 ml (50.5 %)
# Left cortex: 90.8 ml (33.4 %)
# Right cortex: 96.1 ml (35.4 %)
# Artery
# Urinary
# Tumor: 8.5 ml
# Aorta
# Scoop1: 7.4 ml (2.7 %)
    
```

## SINGLE CLICK EXTRACTION

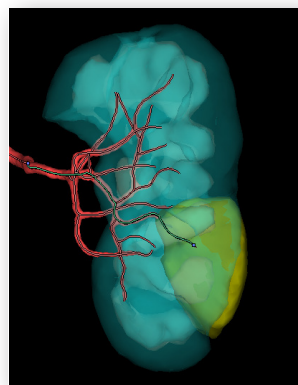
### Tumor with margins



### Vessel territory map/volume



### Path length



- Export masks as .stl files for 3D printing.

To learn more, visit [3DEnterpriseImaging.com](http://3DEnterpriseImaging.com) or email Inside Sales at [fmsusalesinquiry@fujifilm.com](mailto:fmsusalesinquiry@fujifilm.com).